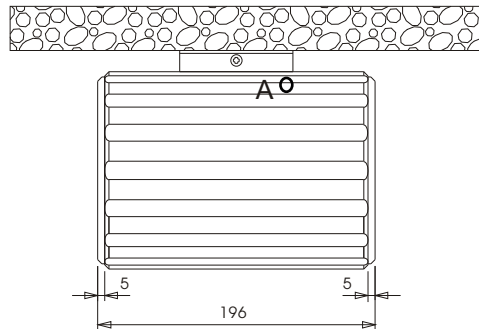
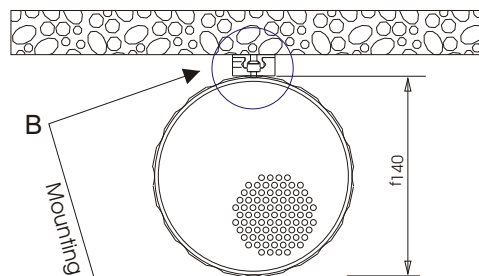


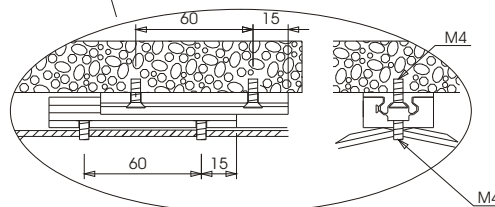
Installation instructions



Side View



Front View



1. Remove the sliding bracket from the unit by using an Allen Key inserted into position "B" as shown on the above drawing.

2. Place the part of the bracket that you have just removed into the required mounting position, mark fixing holes and then fix (bracket only)

3. Select from the 5 core cable (position "A" on the drawing) the tapping required i.e. Example, Black wire = common and Red wire = maximum power.

CELL10/BDT

The connections:

Black = common

Yellow = 2.5 watts (Per side)

Orange = 5 watts

Blue = 10 watts

Red = 20 watts

Installation instructions con/td

CELL10/BDT & CELL10/BDTC

For the CELL10/BDTC the colour connections are as follows:

Black = common

White = 2.5 watts (per side)

Brown = 5 watts

Blue = 10 watts

Red = 20 watts

Important note

Please ensure that the cable is connected to the correct terminals in your selected junction box and that no other connections from the loudspeakers are made. The unused transformer tapping must always be isolated from one another to avoid a short circuit.

4. The loudspeaker is now ready to be mounted onto the bracket previously fitted.
5. Before putting 100 volt line through the units it is advisable to check the impedance of the circuit
6. On checking the line impedance the speaker is in an operational mode.